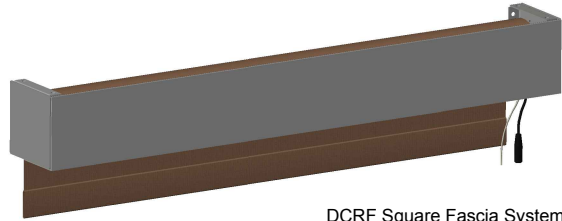
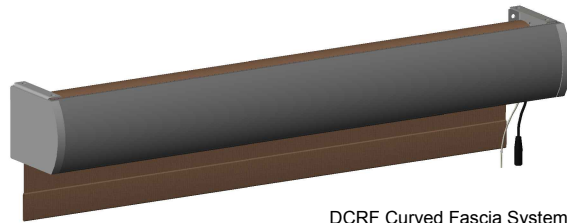


Installing Motorized Roller Shade

Sorina DCRF Motorized Fascia Roller Shade

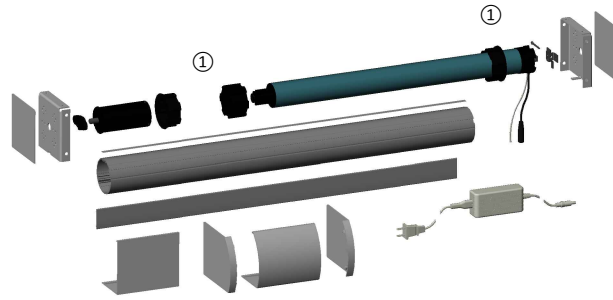


DCRF Square Fascia Systems

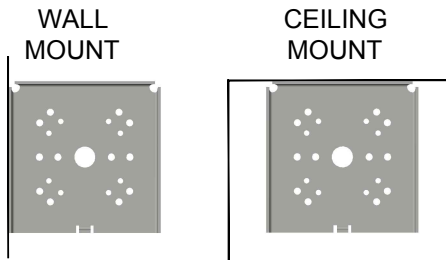


DCRF Curved Fascia Systems

1. Your system should come with a Roller Shade Assembly, Mounting Brackets, Fascia, End Caps, Power Supply and a Control Device (if Purchased).



Note: Crown Adapters ① are NOT required on some variations of Medium Motorized Roller Shade Systems.



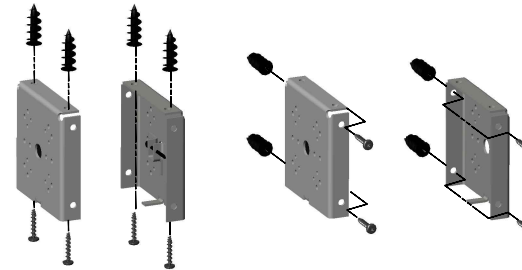
2. Level and mount brackets to a solid surface. Ensure solid blocking, use anchors when necessary.



CEILING MOUNT

Level brackets by adding shims to obtain proper height before affixing to ceiling

WALL MOUNT  
Level wall brackets to proper height before affixing to wall

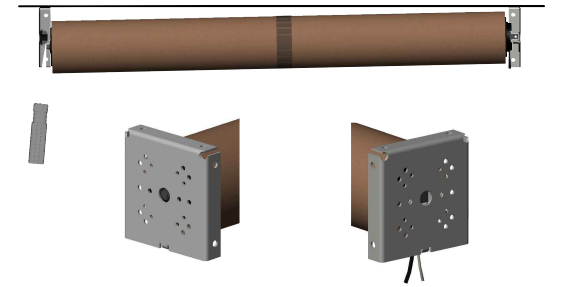


CEILING MOUNT

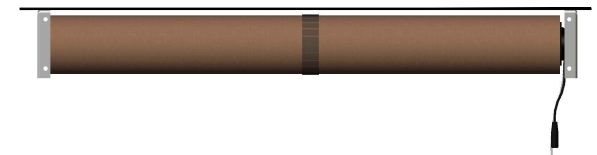
WALL MOUNT

Note: Installer to provide wall anchors and screws appropriate to the surface material and weight of the product. Metal, self-drilling anchors are recommended for drywall.

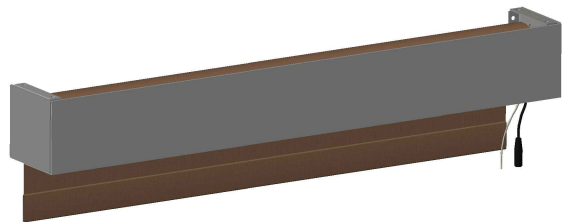
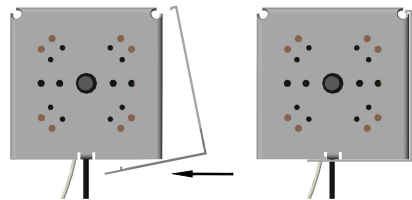
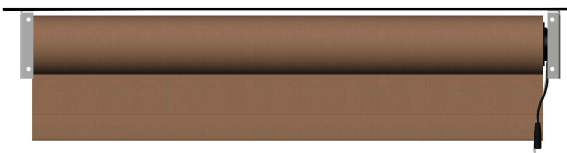
3. Mount Roller Shade by placing motor stud into Motor Bracket hanger body, then compressing idler pin and inserting into Idler Bracket Bearing.



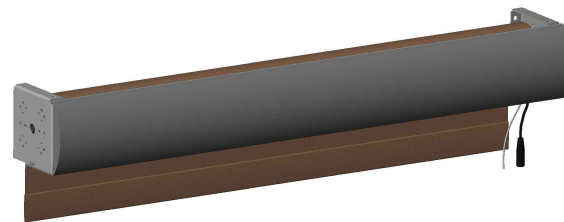
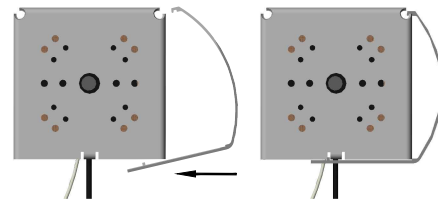
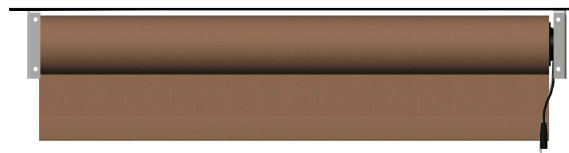
4. Carefully cut Plastic wrap holding the Roller Shade. Be careful to NOT cut the Fabric.



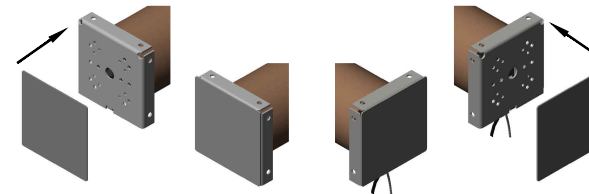
5a. Install Square Fascia as shown below. Hook top of Fascia into front of Fascia Bracket. Push bottom of Fascia until the Fascia Locking Flange snaps into SECOND slot in Fascia Bracket.



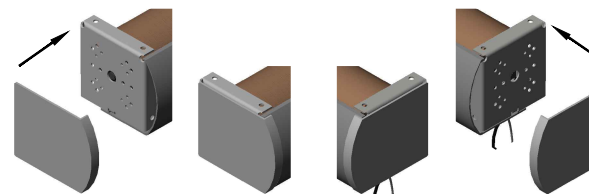
5b. Install Curved Fascia as shown below. Hook top of Fascia into front of Fascia Bracket. Push bottom of Fascia until the Fascia Locking Flange snaps into SECOND slot in Fascia Bracket.



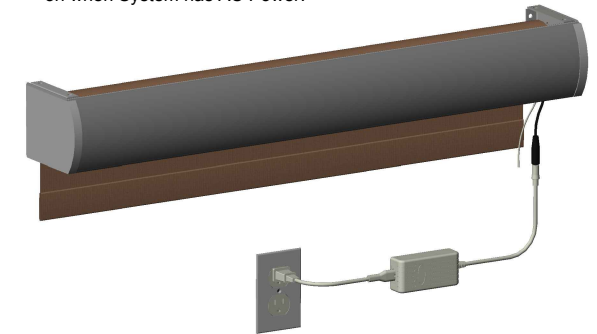
6a. Install Square Fascia Bracket Covers (If System has Square Fascia).



6b. Install Curved Fascia Bracket Covers (If System has Curved Fascia).



7. The DCRF System Motor Power Cord should be connected to the Output of AC/DC Power Adapter. The Power Adapter should be plugged into Standard 110VAC wall outlet. A Green LED will be on when System has AC Power.



Note: Installer should in NO way tamper with the provided power supply.

Roller Shade installation is complete.

If your System needs to be Programmed, Please refer to the Appropriate Programming Instructions for this Product.

Enjoy your new BTX Intelligent Fashion Window Coverings product. For support or more information, email [btxwindow@btxinc.com](mailto:btxwindow@btxinc.com) or call (800) 422-8839.