

Installing Manual Gemini Shade

Gemini Manual Cassette Shade

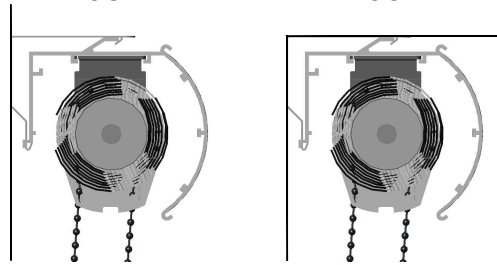


1. Your system should come with a Gemini Shade Assembly, and Mounting Brackets.



WALL MOUNT

CEILING MOUNT



2. Level and mount brackets to a solid surface. Ensure solid blocking, use anchors when necessary.

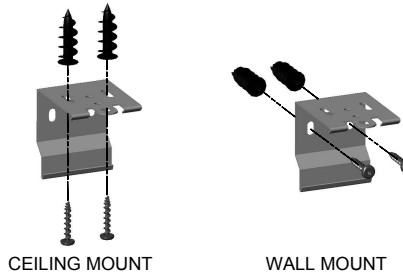


CEILING MOUNT

Level brackets by adding shims to obtain proper height before affixing to ceiling

WALL MOUNT

Level wall brackets to proper height before affixing to wall

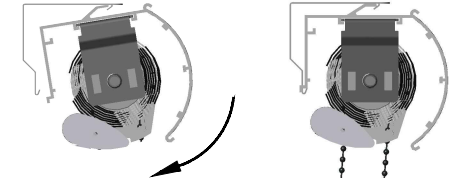


CEILING MOUNT

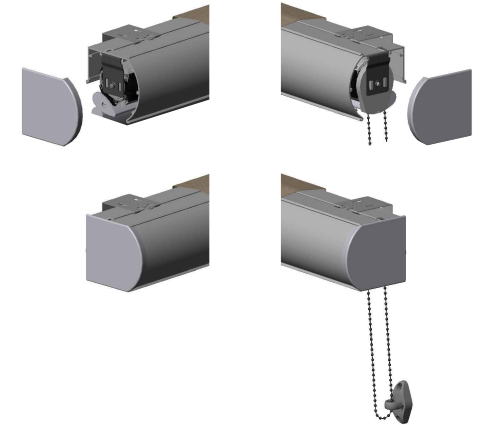
WALL MOUNT

Note: Installer to provide wall anchors and screws appropriate to the surface material and weight of the product. Metal, self-drilling anchors are recommended for drywall.

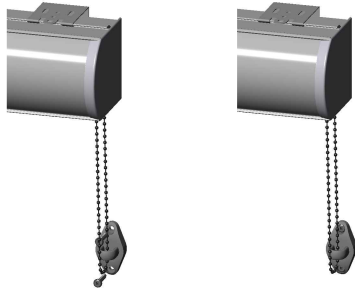
3. Install Gemini Cassette into top of Mounting Bracket. Rotate Cassette until back of Cassette snaps into Mounting Bracket.



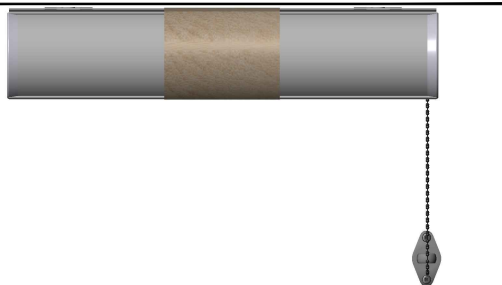
4. Install Cassette End Caps.



5. Attach Safety Device to wall as shown. Ensure Manual Pull Chain is taut when Safety Device is installed.



5. Remove paper wrap in center of Cassette to release Gemini Roller Bottom Bar.



6a. Install Ball Stop by moving shade to Full Open Position and install Ball Stop at Bottom of Manual Clutch Housing as shown below.



Note: Cover removed for clarity.

6b. Install Ball Stop by moving shade to Full Close Position and install Ball Stop at Bottom of Manual Clutch Housing as shown below.



Note: Cover removed for clarity.

7. Pull Chain to move Shade Up or Down for Smooth Operation.



Gemini Shade installation is complete.