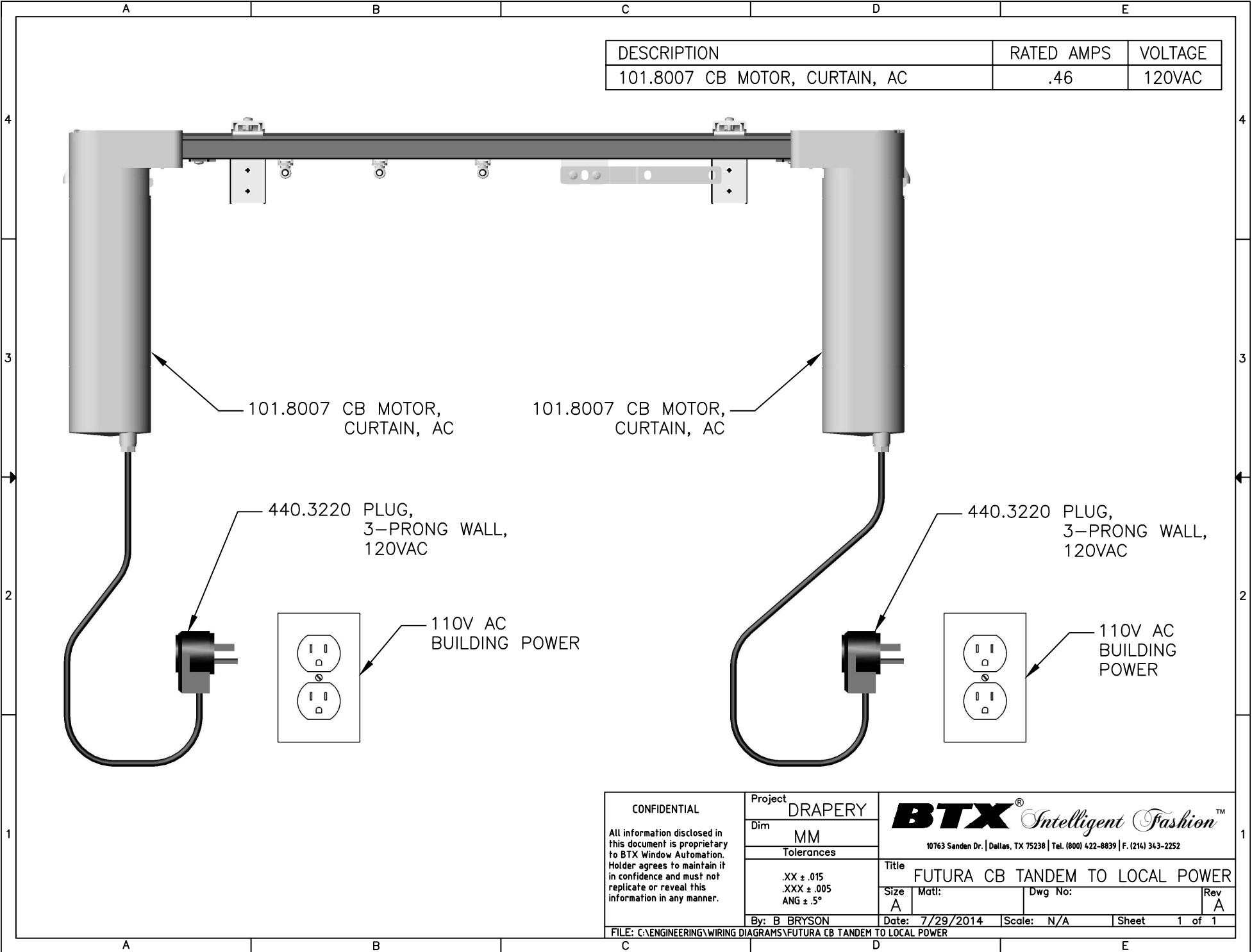


DESCRIPTION	RATED AMPS	VOLTAGE
101.8007 CB MOTOR, CURTAIN, AC	.46	120VAC



<p>CONFIDENTIAL</p> <p>All information disclosed in this document is proprietary to BTX Window Automation. Holder agrees to maintain it in confidence and must not replicate or reveal this information in any manner.</p>	Project	DRAPERLY		
	Dim	MM		
	Tolerances			
	.XX ± .015 .XXX ± .005 ANG ± .5°	Title	FUTURA CB TANDEM TO LOCAL POWER	
	By: B BRYSON	Date: 7/29/2014	Scale: N/A	Sheet 1 of 1

BTX® *Intelligent Fashion*™
10763 Sanden Dr. | Dallas, TX 75238 | Tel. (800) 422-8839 | F. (214) 343-2252